



Inventory control



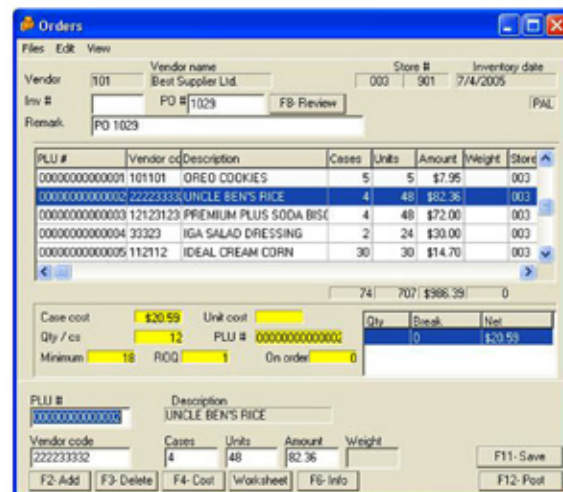


INVENTORY TRACKING module

The inventory module is a comprehensive, easy to maintain addition to L-BOSS. The inventory system is ideal for businesses that use minimum stock levels to manage stock replenishment. With proper inventory ordering and receiving you will be able to minimize your investment and improve overall profits.

System features include:

- Products are individually programmed for stock tracking. As items are sold the on-hand level automatically decreases.
- Set the minimum re-order level for each item.
- Items that need to be ordered from suppliers are given that status. This eliminates steps by only including those products on automatically generated purchase orders. Other items that are tracked only need to be received without generating a purchase order. This could be the case for bakery and dairy products that are maintained by the suppliers directly.
- Items can be linked together using the parent child window. Items that are purchased by the case and sold in different package sizes can be effectively controlled this way.
- Purchase order generation based on minimum stock levels or manual entry.
- Stock receiving based on purchase order or manual entry.
- Back order item tracking.
- Physical count transaction entry.
- Adjustment transaction.
- Stock transfer between locations.
- Reports provide on hand information with inventory date value at cost and retail.
- Print labels for received items.
- Hand-held device interface for wireless or rs232 device types.



System requirements

Windows XP or Windows 2000.
PC PIII 700 or greater with 256 meg ram and 30 gig hard drive.
L-BOSS is required to use this optional module.

All trademarks are property of their respective owners.
Printed in Canada.



210 Laurier, Beloeil, Quebec, Canada J3G 4G7
Tel : 450. 464.2131 Fax : 450. 464.5673